

# 622 ACCU-SPIN 50/5G SPIN REEL GRINDER

## STANDARD FEATURES ::

REAR ROLLER MOUNTING SYSTEM - PRESET POSITIONING OF REEL BASED ON REEL BRAND AND DIAMETER

SINGLE FRONT ROLLER CLAMP - ADJUSTABLE WITH A COLUMN AND RATCHET TOOTHED ADJUSTMENT SYSTEM

HAND-HELD PENDANT CONTROL

DUAL INFEED HANDWHEELS WITH AUTOMATED INFEED MOTORS

COUNTER BALANCED SPIN DRIVE AND 8, 9 AND 11 SPLINE REEL DRIVE ADAPTERS

ROBUST FRAME DESIGN - WELDED-STEEL FRAME AND POWDER COATED FINISH

TRAVERSE SYSTEM - AUTOMATIC BELT DRIVE VARIABLE SPEED USING PROXIMITY SENSORS COGGED TRAVERSE BELT WITH 38" TRAVEL CAPACITY; TWO 1.000 +/- .00025 POLISHED SHAFTS; 90 VOLT DC TRAVERSE MOTOR

RAILS - PRECISION GROUND ROUND RAILS WITH RECIRCULATION BALL BEARINGS

## OPTIONAL EQUIPMENT ::

LED GAUGING SYSTEM - 6220521 (ADD-ON GAUGING KIT) IF PURCHASED SEPARATELY

ELECTRIC OVERHEAD HOIST - PART #6539532

REAR LOAD LIFT STATION - PART #6210510

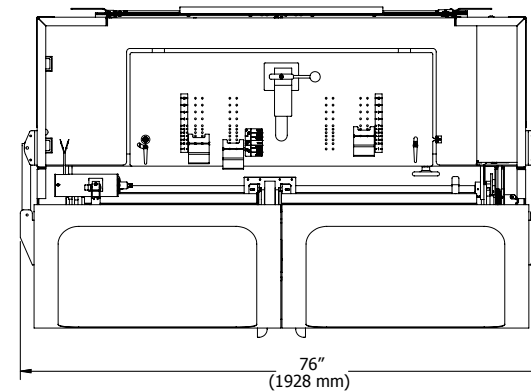
**NOTE:** OPTIONAL GAUGING PACKAGE CAN BE ADDED INDEPENDENTLY

BECAUSE FOLEY IS CONTINUALLY IMPROVING ITS PRODUCTS, SPECIFICATIONS ARE SUBJECT TO CHANGE WITHOUT NOTICE.

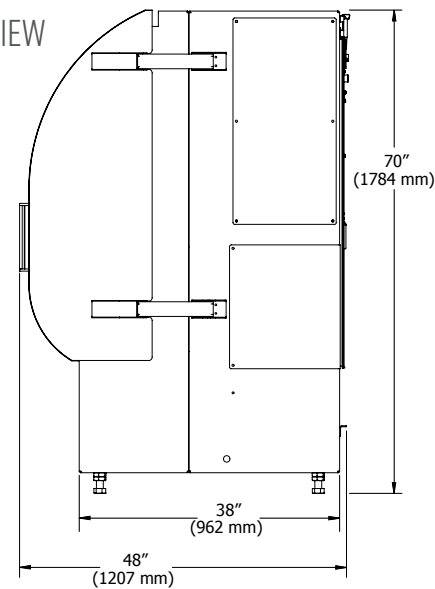
WEIGHT :: 1275 LBS [578 KG]

DIMENSIONS ::

TOP VIEW



SIDE VIEW



DISTRIBUTED BY:



**FOLEY**  
COMPANY

PRECISION AT PLAY

P: 1.715.426.5151

TOLL FREE: 1.800.225.9810

FOLEYCO.COM

MADE IN THE USA

©2019 FOLEY COMPANY, LIT-2019-10006

**FOLEY**  
COMPANY



622 ACCU-SPIN 50/5G  
SPIN REEL GRINDER

SPIN GRINDER WITH OPTIONS TO GROW

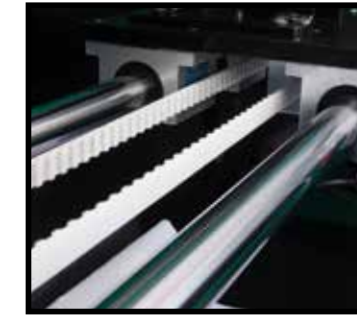
# 622 ACCU-SPIN 50/SG SPIN REEL GRINDER



▶ **LIFTING OPTIONS  
AVAILABLE**

## EASIEST + MOST AUTOMATED TOUCH-OFF GRINDER IN THE INDUSTRY

**1** ▶ **LIVE SHAFT SPIN HUB  
+ TRAVERSE SYSTEM**



**2** ▶ **LED GAUGING SYSTEM  
(OPTIONAL)**



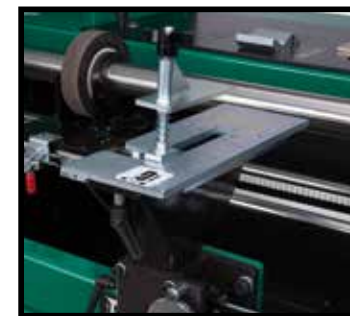
**3** ▶ **DUAL INFEEED HANDWHEELS**



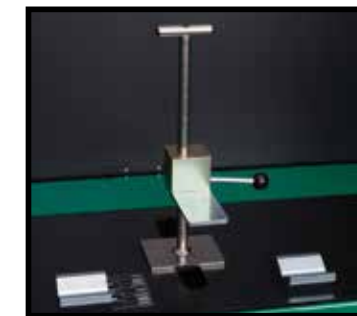
**4** ▶ **PENDANT CONTROL**



**5** ▶ **SINGLE FRONT ROLLER CLAMP**



**6** ▶ **PATENTED REAR ROLLER  
MOUNTING SYSTEM**



**7** ▶ **COUNTER-BALANCED  
SPIN DRIVE**



## SIMPLICITY AT ITS BEST.

▶ **LEARN MORE: [FOLEYCO.COM](http://FOLEYCO.COM)**

### ▶ **622 ACCU-SPIN 50/SG OFFERS ::**

**LIVE SHAFT SPIN HUB**  
DESIGN EFFECTIVELY AND EFFICIENTLY  
PRODUCES A SHARP EDGE IN SHORT  
ORDER.

**PATENTED REAR ROLLER  
MOUNTING SYSTEM**  
LOCATES THE REEL BY THE REAR ROLLER,  
MINIMIZING ISSUES THAT CAN ARISE  
WHEN LOCATING THE REEL BY THE FRONT  
ROLLER.

**LED GAUGING SYSTEM**  
GIVES THE OPERATOR AN EASY VISUAL  
ADJUSTMENT PROCESS ENSURING THE  
REMOVAL OF TAPER AND A PERFECT  
CYLINDRICAL GRIND EVERYTIME. (MODEL  
622 SG)